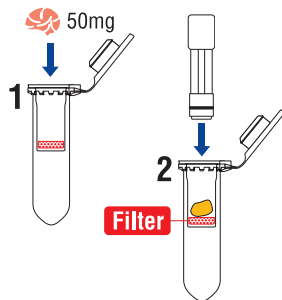


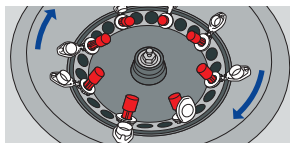
DISPOSABLE HOMOGENIZER BioMasher®

Made in Japan

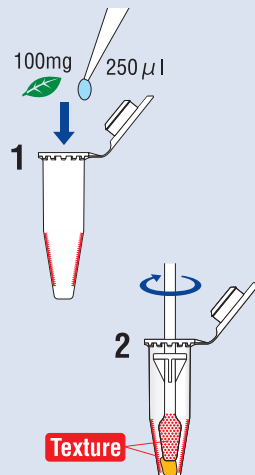
BioMasher-I



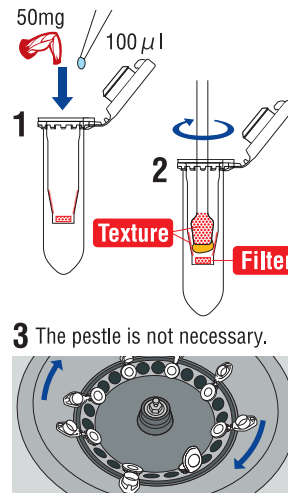
3 The pestle is necessary.



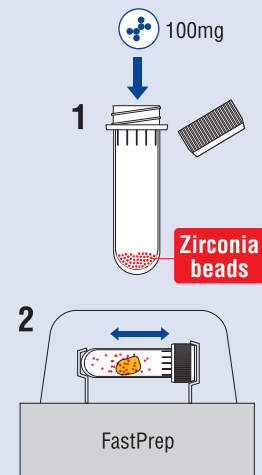
BioMasher-II



BioMasher-III



BioMasher-IV



	BioMasher-I	BioMasher-II	BioMasher-III	BioMasher-IV
Description	For many samples	For increase of the collection amount	For increase of the collection amount For many samples	For hard samples For many samples
Collection amount	Small	Large	Large	Large
Heat	Heatless	Controllable	Controllable	Heat
Device	Centrifuge	Unnecessary	Centrifuge	Cell crusher
Soft samples	◎	◎	◎	○
Hard samples	△	◎	◎	◎
Yeast	×	×	×	◎
Cultured cell	△※	×	△	○

※Please inquire for the usage.